



SYMPOSIUM

Gene Co-expression Modules Underlying Polymorphic and Monomorphic Zooids in the Colonial Hydrozoan, *Hydractinia symbiolongicarpus*

David C. Plachetzki,^{1,*} M. Sabrina Pankey,[†] Brian R. Johnson,[‡] Eric J. Ronne,[§] Artyom Kopp[§] and Richard K. Grosberg[§]

*Department of Molecular, Cellular and Biomedical Sciences, The University of New Hampshire, Durham, NH 03801, USA; [†]Department of Ecology Evolution and Marine Biology, The University of California at Santa Barbara, Santa Barbara, CA 93106, USA; [‡]Department of Entomology, The University of California at Davis, Davis, CA 95616, USA; [§]Department of Evolution and Ecology, Center for Population Biology, The University of California at Davis, Davis, CA 95616, USA

From the symposium “A New Organismal Systems Biology: How Animals Walk the Tight Rope between Stability and Change” presented at the annual meeting of the Society for Integrative and Comparative Biology, January 3–7, 2014 at Austin, Texas.

¹E-mail: david.plachetzki@unh.edu

Synopsis Advances in sequencing technology have forced a quantitative revolution in Evolutionary Biology. One important feature of this renaissance is that comprehensive genomic resources can be obtained quickly for almost any taxon, thus speeding the development of new model organisms. Here, we analyze 20 RNA-seq libraries from morphologically, sexually, and genetically distinct polyp types from the gonochoristic colonial hydrozoan, *Hydractinia symbiolongicarpus* (Cnidaria). Analyses of these data using weighted gene co-expression networks highlight deeply conserved genetic elements of animal spermatogenesis and demonstrate the utility of these methods in identifying modules of genes that correlate with different zooid types across various statistical contrasts. RNA-seq data and analytical scripts described here are deposited in publicly available databases.

Introduction

Next-generation sequencing (NGS) is revolutionizing organismal biology and holds particular promise for understanding the genetic mechanisms that give rise to complex morphological traits (Meng et al. 2013; Reed et al. 2011; Siebert et al. 2011). One common application of NGS is RNA-seq. In RNA-seq, sequencing libraries are prepared from mRNAs extracted from tissues of interest and sequenced on a massively parallel platform such as Illumina (Mortazavi et al. 2008). By mapping individual sequencing reads back to genomic or transcriptome assemblies, quantitative estimates of the expression levels of individual genes can be assessed statistically (Wang et al. 2009). Comparisons of differential gene expression between tissues of interest are now ubiquitous in biological research, but additional information exists in these large and complex datasets.

For instance, genes that underlie a specific biological function are often expressed in a correlated fashion (Stuart et al. 2003; Miller et al. 2008). Thus, analytical procedures that focus on identifying such correlations such as weighted gene co-expression network analysis (WGCNA; Langfelder and Horvath 2008) are a powerful means for identifying the key genetic modules underlying the trait of interest. Here, we test the utility of the WGCNA (Langfelder and Horvath 2008) in characterizing the genetic modules that underlie specific morphological phenotypes (e.g., zooid types) using an extensive RNA-seq dataset derived from the modular colonial hydrozoan, *Hydractinia symbiolongicarpus*.

Hydractinia symbiolongicarpus is a powerful model system for integrative studies in organismal biology for several reasons. First, it is amenable to laboratory husbandry and the full reproductive cycle can be

accomplished in the laboratory within roughly 3 months—a shorter period from generation to generation than other popular model taxa such as mice (Silver 1995) or zebrafish (Detrich et al. 2011). Second, colonies are easily crossed, facilitating the sorts of genetics studies that are difficult in other hydrozoan models such as *Hydra* species. Furthermore, *H. symbiolongicarpus*, like other colonial invertebrates, shows a remarkable capacity for regeneration, allowing individual colonies to be sub-cloned by surgical fragmentation and stocked in perpetuity. In addition, the recent development of transgenic approaches in the congener, *Hydractinia echinata* (Kunzel et al. 2010), opens the possibility of functional genomics. Finally, transcriptome data for *H. echinata* are available (Soza-Ried et al. 2010) and a draft genome sequence of *H. symbiolongicarpus* is in preparation (Schnitzler et al. 2014).

Colonies of *H. symbiolongicarpus* consist of up to four distinct types of polyps, including feeding gastrozooids, reproductive gonozooids, defensive dactylozooids, and sensory spiral zooids, all of which develop from basal ectodermal mat or network of stolons (McFadden et al. 1984; Frank et al. 2001). Here, we characterize an extensive RNA-seq dataset comprising 20 sequencing libraries representing multiple replicates of male and female gastrozooids and gonozooids from different genotypes. We describe a workflow for the analysis of these data using the WGCNA statistical package (Langfelder and Horvath 2008) and show that sufficient signal exists in our RNA-seq dataset to construct networks of correlated gene expression. Many of the genetic modules recovered by these methods correlate with specific zooid morphologies. Our analyses provide the foundation for extending our understanding of the modules of functionally related genes that underlie specific morphological features, such as the different types of zooids in *H. symbiolongicarpus* and other modular organisms that exhibit morphological polymorphism at the level of zooids or polyps.

Raw data furnished by this study can be accessed at Sequence Read Archive (<http://www.ncbi.nlm.nih.gov/sra>) (Bioproject PRJNA244078). Data matrices and scripts for statistical analyses are available at <https://bitbucket.org/plachetzki/plachetzki-et-al.-sicb-2014>, and sequence files associated with this analysis are located at [dryad \(doi:10.5061/dryad.98pt3\)](https://doi.org/10.5061/dryad.98pt3).

Methods

Animal stocks and husbandry

We collected colonies of *H. symbiolongicarpus* inhabiting shells of the intertidal hermit crab, *Pagurus longicarpus*, from Barnstable Harbor, MA,

USA, in July 2010. Animal husbandry was conducted as previously described (Grosberg et al. 1996). Briefly, we maintained the hermit crabs and their associated *H. symbiolongicarpus* in a 200-gallon recirculating seawater system (held at 18°C) at the University of California, Davis. We fed the crabs and their associated colonies daily to repletion with cultures of brine shrimp (*Artemia salina*) that were 2–3 days old. We mated single pairs of male and female colonies by isolating crabs carrying single, sexually mature male or female colonies in the dark for 24 h, then placing them together in 2-L containers of filtered (0.44 µm) seawater (FSW) at room temperature under bright light for 4 h. We collected ≈500 fertilized embryos from each mating, and transferred them into clean seawater in sterile Petri dishes. We transferred the developing embryos daily into clean FSW. After 55 h, we induced metamorphosis by treating planulae with a solution of 55 mM CsCl in FSW (Muller 1973). We transferred metamorphosing planulae to borosilicate glass plates submerged in FSW, where they continued to develop into primary feeding polyps. We fed the resulting colonies daily to repletion with *Artemia* aged 2–3 days until the colonies reached sexual maturity after 5–8 weeks. We selected two male and two female full-sibling offspring for extractions of RNA.

Extraction of RNA, construction of RNA-seq libraries, and sequencing

We used fine scissors to excise gonozooids and gastrozooids from living colonies, and placed the polyps directly into Trizol (Invitrogen) on ice. We immediately extracted RNA after removal, following manufacturer's protocols (Invitrogen). We extracted three replicate total-RNA samples from each type of polyp (male gastrozooid, male gonozooid, female gastrozooid, and female gonozooid) from four full-sibling individuals (two male and two female colonies, each), for a total of 24 extractions. We eluted total RNA and stored the RNA at –80°C in RNase-free H₂O. We assessed RNA quality using a Bioanalyzer and the RNA 1000 kit (Agilent). We prepared RNA-seq libraries using the TruSeq kit (version 2, Illumina) with 200–500 ng of total RNA per library, following the manufacturer's protocols. We used a Bioanalyzer and DNA 100 chips (Agilent) to determine physical quality of sequencing libraries. Sequencing and de-multiplexing were carried out at the University of California, Davis Genome Center on two lanes of HiSeq 2000 (paired end 100) with 12 RNA-seq libraries per lane. Four of our RNA-seq

Table 1 Description of RNA-seq datasets from *Hydractinia symbiolongicarpus* used in the current study

RNA-seq dataset	Sex	Zooid type	Genotype	SRA accession
DP1	Male	Gastrozooid	48	SRS598802
DP2	Male	Gonozooid	5	SRS598818
DP3	Female	Gastrozooid	17	SRS599147
DP4	Female	Gonozooid	17	SRS599148
DP5	Male	Gastrozooid	48	SRS599223
DP6	Male	Gonozooid	48	SRS599224
DP7	Female	Gastrozooid	73	SRS599225
DP8	Female	Gonozooid	73	SRS599227
DP9	Male	Gastrozooid	5	SRS599283
DP10	Male	Gonozooid	5	SRS599284
DP11	Female	Gonozooid	17	SRS599285
DP12	Male	Gastrozooid	48	SRS599287
DP13	Male	Gastrozooid	73	SRS599872
DP15	Female	Gonozooid	73	SRS599873
DP16	Male	Gastrozooid	5	SRS599874
DP17	Male	Gonozooid	5	SRS599875
DP18	Female	Gastrozooid	17	SRS599876
DP19	Female	Gonozooid	17	SRS601014
DP20	Male	Gonozooid	48	SRS601015
DP21	Female	Gastrozooid	17	SRS601017

Note: Sequences deposited under Bioproject PRJNA244078.

datasets had low read content, and we eliminated them from subsequent analysis (see Table 1).

Bioinformatics: filtering and assembly of raw data

We first cleaned low-quality reads from the raw sequence data for each RNA-seq dataset using `fastq_quality_filter` version 0.013 and the first 10 bp of each read were removed using `fastx_trimmer` version 0.013 (http://hannonlab.cshl.edu/fastx_toolkit/index.html). Sequencing adaptors were removed using `cutadapt` (Martin 2011). Comparisons between pre-cleaning and post-cleaning datasets were made using `fastqc` version 0.10.0 (<http://www.bioinformatics.babraham.ac.uk/projects/fastqc/>). Following cleaning, we used Trinity version 2013.11.10 (Grabherr et al. 2011) under default parameters to assemble non-redundant datasets with the highest number of reads. We then mapped reads from individual, cleaned RNA-seq datasets to contigs using `bowtie` version 1.0.1 (Langmead et al. 2009) within RSEM version 1.1.15 (Li and Dewey 2011). Mapping efficiency was assessed using the `flagstat` command in `samtools` version 0.1.19 (Li et al. 2009). The raw transcriptome assembly and the resulting matrix of un-normalized

expected count data are available at the dryad link associated with this work.

Bioinformatics: Statistical analytics

We analyzed the counts matrix from all of 20 datasets using WGCNA version 1.36 (Langfelder and Horvath 2008). First, we discarded all contigs that included fewer than 10 counts in any library. The resulting matrix included 3539 contigs. Next, we normalized count data using the model-based `calcNormFactors` function in EdgeR version 3.6.2 (Robinson et al. 2010). Hierarchical clustering was then used to assess similarity between the resulting 20 RNA-seq datasets using `flashClust` in R version 3.0.0 (R Development Core Team 2008). As none of our datasets exceeded a threshold of 0.9% divergence in Euclidian distance, none were considered outliers and all were included in the following analyses. Soft thresholding analyses of powers and WGCNA analyses were conducted as per the authors' instructions using the `pickSoftThreshold` function in WGCNA. Once modules of co-expressed genes were estimated, statistical analyses included: (1) tests of association between individual genes and proposed module membership, (2) tests of association between individual genes and sex or zooid type, and (3) analyses of variance (ANOVA) to test for the effect of zooid type and sex on expression of each of the elucidated modules. *P*-values were corrected for multiple tests using a false discovery rate of 0.05. Finally, the sequences of individual modules of co-expressed genes that resulted from this analysis were BLASTed against the `refseq_protein` database (Altschul et al. 2009) with an expect value of 1.0×10^{-3} and annotated using BLAST2GO (Conesa et al. 2005).

Results

RNA-seq data

Twenty *H. symbiolongicarpus* RNA-seq datasets (paired end 100 bp, HiSeq 2000) were prepared during this study. These datasets comprise multiple replicates of male and female gastrozooids and gonozooids, with two genotypes per sex (genotypes 5, 48, 17, and 73). Table 1 describes these data and their publicly available accessions, which together comprise more than 2.5×10^8 reads.

Assembly in Trinity produced 120,196 contigs (transcripts). Twenty-five percent of the total sequence length from the assembly is contained in 8519 contigs of 1556 bp or greater, 50% of total sequence length from the assembly is contained in 24,514 contigs of 890 bp or greater, and 75% of total sequence length from the assembly is contained

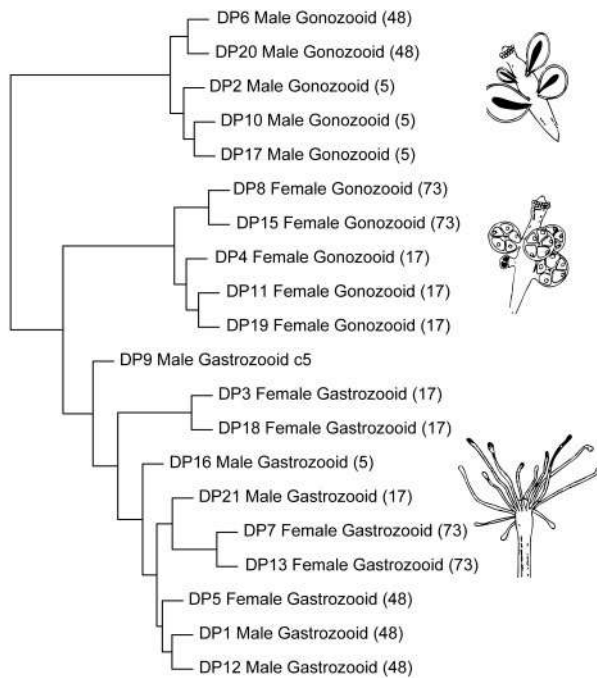


Fig. 1 Cluster dendrogram of the 20 RNA-seq datasets from *Hydractinia symbiolongicarpus* described in this article. The branching pattern shown here is drawn from overall Euclidean distances in gene expression between each library after pruning and normalization of data (see the “Methods” section). This analysis clusters male and female gonozooids into separate groups, whereas gastrozooids of both sexes are clustered into a single group. Dendrogram based on 3549 transcripts that had greater than 10 reads per contig in each library.

in 54,696 contigs of 432 bp or greater. On average 88% of read data across 20 cleaned RNA-seq datasets mapped to the assembly.

Figure 1 shows a dendrogram of these 20 RNA-seq libraries, following the removal of contigs that had fewer than 10 counts per contig for each library. Each type of polyp, including female gonozooids, male gonozooids, and gastrozooids were recovered each as unique clusters, the gastrozooid cluster being comprised of both sexes. The genotype of a given RNA-seq library was not a strong determinant in its clustering, as would be expected if genotype played a limited role in driving differences in gene expression between types of polyps.

Weighted gene co-expression network analysis

The first step in WGCNA is the selection of β , the soft thresholding power used to calculate the adjacency matrix, or co-expression network, of genes. Using the automated approach to network construction (Zhang and Horvath 2005; Langfelder and Horvath 2008), we selected a power of 9 for β ,

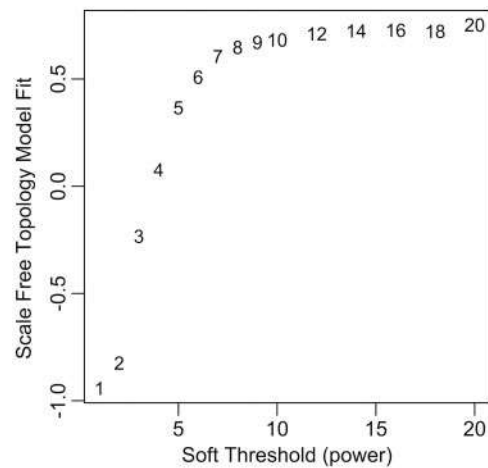


Fig. 2 Selection of soft thresholding power β . Our filtered dataset was fit to a scale-free model (x -axis) of proposed values for β ranging from 1 to 20. We selected a value of 9 for β as it reflects the inflection point where model fit begins to decrease with increases in power.

which is the inflection point in proposed power values where the scale-free topology model fit to our data begins to stop improving with increases in power (Fig. 2). Using this value for β , our data were partitioned into 10 gene co-expression modules that included between 38 and 1258 transcripts (Fig. 3A). Fifteen transcripts, out of the original 3549 did not fall into any significant module of gene co-expression.

Genes included in specific modules may share similar biological functions. Thus, understanding the composition of specific modules may inform our understanding of the differences in gene expression that underlie the different types of zooids in *H. symbiolongicarpus*. In order to assign modules of co-expressed transcripts to specific traits (i.e., gastrozooids and gonozooids of different sexes), we first verified a gene’s module membership by testing the correlation between the individual gene’s expression and the overall expression eigenscore of its assigned module. We then tested the association between module eigenscores and trait: male gonozooid (MO), female gonozooid (FO), or gastrozooid (A). Figure 3B shows the results of these correlations when the zooid type A/O (gastrozooid A and gonozooid O) is used as a correlate of membership in a gene module. This categorization scheme disregards sex differences between zooid samples. These analyses suggest that the turquoise, pink, blue, and yellow modules are strongly associated with A/O zooid types and therefore may represent genetic modules underlying some of the morphological differences in

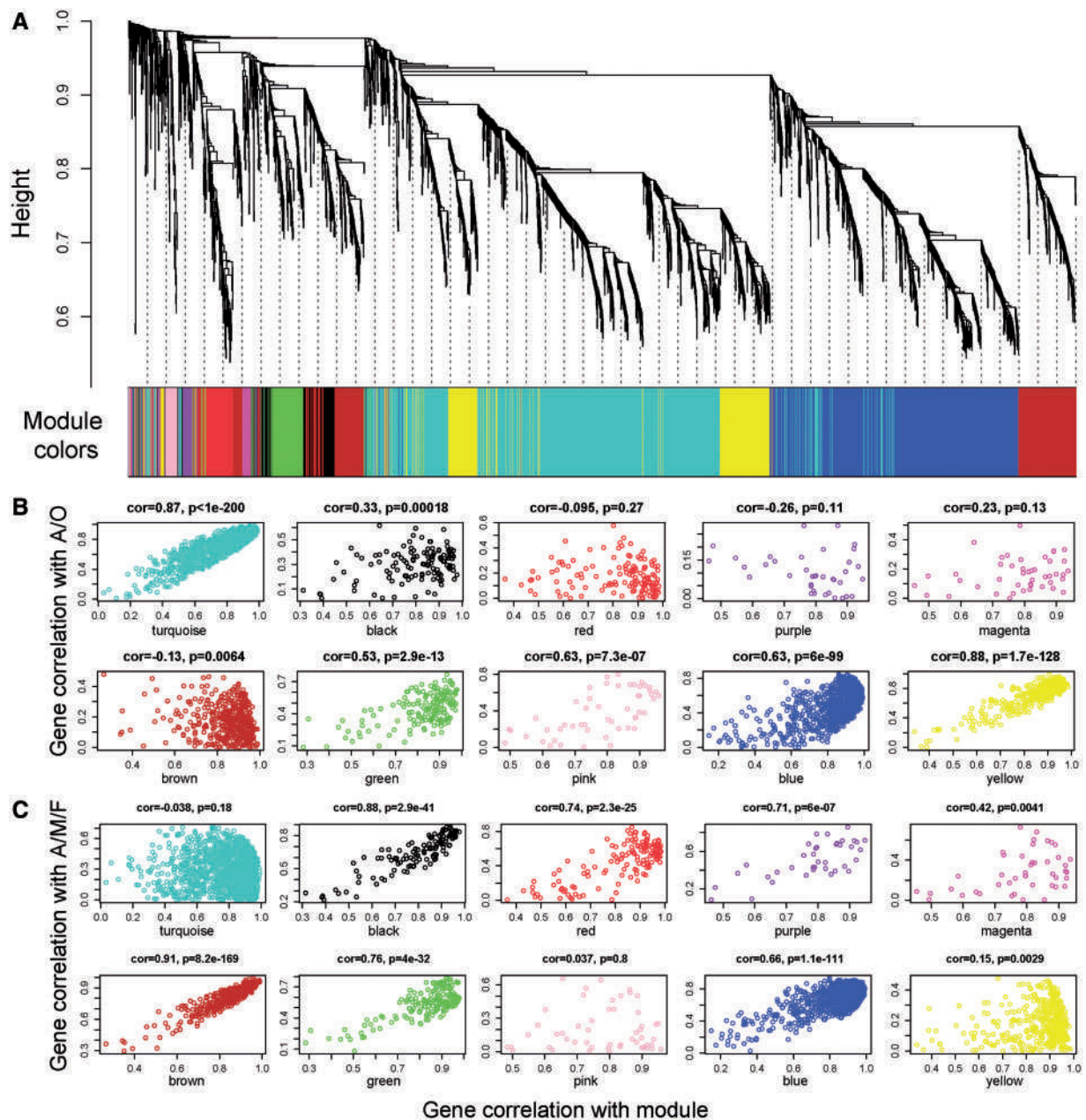


Fig. 3 Cluster dendrogram and trait-correlations of 3549 transcripts analyzed using WGCNA (Langfelder and Horvath 2008). **(A)** Cluster dendrogram showing the relationships of all transcripts and their assignment to specific modules (colored bars) of correlated gene expression. **(B)** Scatterplots showing the relationship between trait-gene correlation and module-gene correlations under the A/O trait scheme (gastrozoid (A) and gonozoid (O)). Here, the eigenvectors estimated in WGCNA for each gene are first correlated with a given gene's module of membership (*x*-axis, denoted by bars of different colors in A) and then those values are correlated with a two-state conditional variable A/O (*y*-axis). Modules with high-scoring correlations are those in which within-module variation is explained by the A/O contrast. **(C)** Scatterplots showing the relationship between trait-gene correlation and module-gene correlations under the A/MO/FO trait scheme (gastrozoid (A), male gonozoid (MO), and female (FO)). As in (B) the eigenvectors estimated in WGCNA for each gene are first correlated with a given gene's module of membership (*x*-axis) and then those values are correlated with the three-state conditional variable A/MO/FO (*y*-axis). Modules with high-scoring correlations are those in which within-module variation is explained by the A/MO/FO contrast.

these zooid types (Fig. 3B). However, other modules that do not yield high correlations between module membership and A/O trait-distinctions may be explained by other possible trait categorization

schemes. For instance, genes included in the red, brown, and green modules show a low correlation to zooid type under the A/O scheme, but a high correlation to zooid type once zooids are categorized

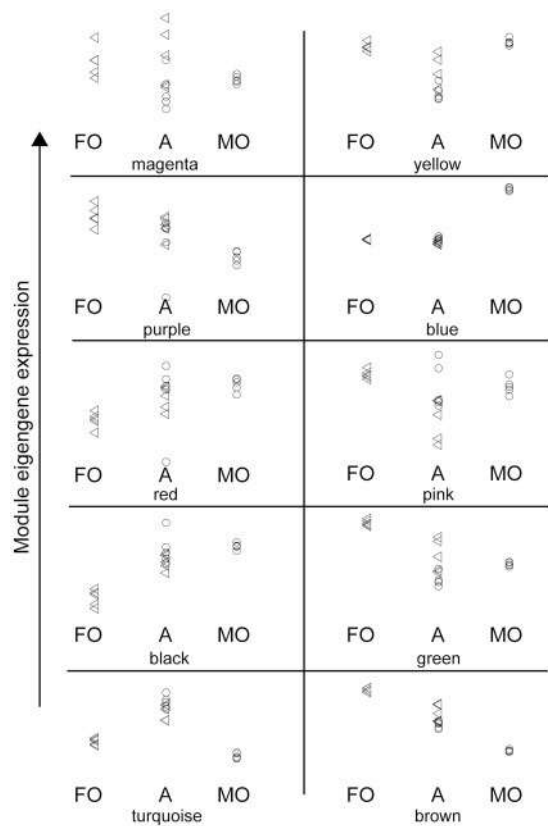


Fig. 4 Module eigengene expression distributions across libraries for each zooid type. Eigengene expression values for each of 20 libraries were plotted for each module by zooid type. Our results from ANOVA suggest that the turquoise module strongly corresponds to the gastrozooids of both sexes (A), the brown, and green modules correspond to the female gonozooid (FO) trait, and the blue module corresponds to the male gonozooid (MO) trait. Circles, male; triangles, female.

as either gastrozooid, male gonozooid, or female gonozooid (A/MO/FO) (Fig. 3C).

In order to test whether zooid type and/or sex has significant explanatory power to predict the expression of our estimated genetic modules, we conducted an ANOVA on each module (Fig. 4). These analyses suggest that the turquoise module is significantly associated with gastrozooid type (zooid: $F=100$, $P<0.001$); the magenta and brown modules with sex differences (magenta: $F=6.5$, $P=0.0424$; brown: $F=155$, $P<0.001$); the green module is strongly associated with the female gonozooid type (sex: $F=35.4$, $P=0.0001$; zooid: $F=30.1$, $P=0.0002$); and the blue module associates strongly with the male gonozooid type (sex: $F=12.5$, $P=0.0069$; zooid: $F=16.1$, $P=0.0034$). Support for this association between the blue module and male gonozooid polyp type comes from GO analyses of the blue module, which reveal a

number of genes associated with spermatogenesis and meiosis (Table 2). The sequences of the transcripts from each module are given at the dryad link associated with this publication; however, a detailed global analysis of all the genes contained in each module will be explicated in a forthcoming publication.

Discussion

We describe the data and their deposition in publicly available databases from 20 RNA-seq libraries derived from multiple replicates of male and female gastrozooids and gonozooids from the colonial hydrozoan *H. symbiolongicarpus*. Our analyses suggest that the WGCNA approach to uncovering genes associated with specific morphological features may be a powerful tool for organismal biology. We recovered gene modules that correlate strongly with specific types of zooids. In particular, the blue module correlates with the male gonozooid trait and this module contains numerous genes associated with spermatogenesis and meiosis (Table 2).

The modules of correlated gene expression estimated from WGCNA are *a priori* naïve to trait-states and associations between the specific modules identified and trait-states are driven by nuances in the expression data. This renders the WGCNA approach a valuable tool for identifying the key genetic constituents underlying traits where little is known, such as the polymorphic polyp morphologies of *H. symbiolongicarpus*. In addition, modules that show no correlation with any particular state of a trait do not represent failures in the procedure. Such modules may represent molecular functions that are shared across states but have correlated expression nonetheless, such as metabolic pathways.

All comparative transcriptomics analyses are likely to include false positive and negative results. Therefore, analyses such as these represent only a first step in identifying the genes that function to specify different polyp morphologies. Future analyses will investigate the expression patterns and molecular functions of selected candidate genes recovered in the modules of correlated gene expression described here. In addition, our present analyses of gene ontology are based on BLAST (Altschul et al. 1997) searches of similarity against accessioned databases. Although useful, such analyses conflate orthology and paralogy. Future analyses will apply a more robust phylogenetic approach aimed at disentangling orthology from paralogy in genes of interest. Only then may we be able to address the evolutionary

Table 2 *Hydractinia symbiolongicarpus* contigs (transcripts) with gene ontological terms related to male-specific traits from the blue, male gonozooid-specific, module of co-expressed genes

Contig name	Closest BLAST hit	Process (P) and cellular compartment (C)	GO #
comp54693_c0	Bardet-Biedl syndrome 4 protein	Spermatid development	GO:0007286
comp36203_c0	Dihydrolipoyl mitochondrial-like	Sperm capacitation	GO:0048240
comp50065_c0	e3 Ubiquitin-protein ligase herc2	Spermatogenesis	GO:0007283
comp58851_c0	Piwi-like protein 1	Spermatogenesis	GO:0007283
comp40539_c0	Sorbin and sh3 domain-containing protein 2 isoform ×3	Spermatid development	GO:0007286
comp54701_c0	Sperm surface protein sp17	Binding of sperm to zona pellucida	GO:0007339
comp54434_c0	Calreticulin-like	Regulation of meiosis	GO:0040020
comp59793_c0	Structural maintenance of chromosomes protein 3	Meiosis	GO:0007126

significance of our findings as they relate to the origins of polymorphic polyp types and gametogenesis.

Acknowledgments

The authors are indebted to Brenda B. Cameron for assistance and training in animal husbandry. The manuscript benefited greatly from helpful comments from two anonymous reviewers and the editorial staff at *ICB*.

Funding

This work was supported by a Howard Hughes Medical Institute postdoctoral fellowship of the Life Sciences Research Foundation to D.C.P. and a National Science Foundation grant OCE 09-29057 to R.K.G.

References

- Altschul SF, Gertz EM, Agarwala R, Schaffer AA, Yu YK. 2009. PSI-BLAST pseudocounts and the minimum description length principle. *Nucleic Acids Res* 37:815–24.
- Altschul SF, Madden TL, Schaffer AA, Zhang J, Zhang Z, Miller W, Lipman DJ. 1997. Gapped BLAST and PSI-BLAST: a new generation of protein database search programs. *Nucleic Acids Res* 25:3389–402.
- Conesa A, Gotz S, Garcia-Gomez JM, Terol J, Talon M, Robles M. 2005. Blast2GO: a universal tool for annotation, visualization and analysis in functional genomics research. *Bioinformatics* 21:3674–6.
- Detrich HW, Westerfield M, Zon LI. 2011. *The zebrafish: genetics, genomics and informatics*. San Diego, CA: Academic Press.
- Frank U, Leitz T, Muller WA. 2001. The hydroid *Hydractinia*: a versatile, informative cnidarian representative. *Bioessays* 23:963–71.
- Grabherr MG, Haas BJ, Yassour M, Levin JZ, Thompson DA, Amit I, Adiconis X, Fan L, Raychowdhury R, Zeng Q, et al. 2011. Full-length transcriptome assembly from RNA-Seq data without a reference genome. *Nat Biotechnol* 29:644–52.
- Grosberg RK, Levitan DR, Cameron BB. 1996. Evolutionary genetics of allorecognition in the colonial hydroid *Hydractinia symbiolongicarpus*. *Evolution* 50:2221–40.
- Kunzel T, Heiermann R, Frank U, Muller W, Tilmann W, Bause M, Nonn A, Helling M, Schwarz RS, Plickert G. 2010. Migration and differentiation potential of stem cells in the cnidarian *Hydractinia* analysed in eGFP-transgenic animals and chimeras. *Dev Biol* 348:120–9.
- Langfelder P, Horvath S. 2008. WGCNA: an R package for weighted correlation network analysis. *BMC Bioinformatics* 9:559.
- Langmead B, Trapnell C, Pop M, Salzberg SL. 2009. Ultrafast and memory-efficient alignment of short DNA sequences to the human genome. *Genome Biol* 10:R25.
- Li B, Dewey CN. 2011. RSEM: accurate transcript quantification from RNA-Seq data with or without a reference genome. *BMC Bioinformatics* 12:323.
- Li H, Handsaker B, Wysoker A, Fennell T, Ruan J, Homer N, Marth G, Abecasis G, Durbin R: 1000 Genome Project Data Processing Subgroup. 2009. The sequence alignment/map format and SAMtools. *Bioinformatics* 25:2078–9.
- Martin M. 2011. Cutadapt removes adapter sequences from high-throughput sequencing reads. *EMBnet.journal* 17:10–2.
- McFadden CS, McFarland MJ, Buss LW. 1984. Biology of hydractiniid hydroids. 1. Colony Ontogeny in *Hydractinia echinata* (Flemming). *Biol Bull* 166:54–67.
- Meng F, Braasch I, Phillips JB, Lin X, Titus T, Zhang C, Postlethwait JH. 2013. Evolution of the eye transcriptome under constant darkness in *Sinocyclocheilus* cavefish. *Mol Biol Evol* 30:1527–43.
- Miller JA, Oldham MC, Geschwind DH. 2008. A systems level analysis of transcriptional changes in Alzheimer's disease and normal aging. *J Neurosci* 28:1410–20.
- Mortazavi A, Williams BA, McCue K, Schaeffer L, Wold B. 2008. Mapping and quantifying mammalian transcriptomes by RNA-Seq. *Nat Methods* 5:621–8.
- Muller WA. 1973. Induction of metamorphosis by bacteria and ions in the planulae of *Hydractinia echinata*; an approach to the mode of action. *Publ Seto Mar Biol Lab* 20:195–208.
- R Development Core Team. 2008. R: A language and environment for statistical computing. Vienna, Austria.

- Reed RD, Papa R, Martin A, Hines HM, Counterman BA, Pardo-Diaz C, Jiggins CD, Chamberlain NL, Kronforst MR, Chen R, et al. 2011. optix drives the repeated convergent evolution of butterfly wing pattern mimicry. *Science* 333:1137–41.
- Robinson MD, McCarthy DJ, Smyth GK. 2010. edgeR: a Bioconductor package for differential expression analysis of digital gene expression data. *Bioinformatics* 26:139–40.
- Schnitzler CE, Sanders SM, Plickert G, Seoighe C, Buss LW, Wollfsburg TG, Nicotra ML, Mullikin JC, Cartwright P, Frank U, et al. (eds.). 2014. A tale of two *Hydractinia* genomes: comparative genomics of two sister Hydrozoan species. Society for integrative and comparative biology. Austin.
- Siebert S, Robinson MD, Tintori SC, Goetz F, Helm RR, Smith SA, Shaner N, Haddock SH, Dunn CW. 2011. Differential gene expression in the siphonophore *Nanomia bijuga* (Cnidaria) assessed with multiple next-generation sequencing workflows. *PLoS One* 6:e22953.
- Silver LM. 1995. Mouse genetics: concepts and applications. New York: Oxford University Press.
- Soza-Ried J, Hotz-Wagenblatt A, Glatting KH, del Val C, Fellenberg K, Bode HR, Frank U, Hoheisel JD, Frohme M. 2010. The transcriptome of the colonial marine hydroid *Hydractinia echinata*. *FEBS J* 277:197–209.
- Stuart JM, Segal E, Koller D, Kim SK. 2003. A gene-coexpression network for global discovery of conserved genetic modules. *Science* 302:249–55.
- Wang Z, Gerstein M, Snyder M. 2009. RNA-Seq: a revolutionary tool for transcriptomics. *Nat Rev Genet* 10:57–63.
- Zhang B, Horvath S. 2005. A general framework for weighted gene co-expression network analysis. *Stat Appl Genet Mol Biol* 4: Article17.